



Anti-Bullying & E-Safety Policy (page 10)

Policy Originator	Lisa Rawashdeh
Governor Responsible	Catherine Nicholls
Ratified on	28.10.19
Review period	Annual - Autumn 20

Contents

1. Introduction
2. Aims
3. Definition
4. Signs and Symptoms
5. Strategies
6. Advice for Parents
7. Associated Policies
8. Monitoring
9. Supporting Organisations and Guidance

FERRY LANE PRIMARY SCHOOL

ANTI-BULLYING POLICY

1. Introduction

This policy is based on DfE guidance "*Preventing and Tackling Bullying. Advice for headteachers, staff and governing bodies*", March 2014 and it is recommended that schools read this guidance: <https://www.gov.uk/government/publications/preventing-and-tackling-bullying>

Section 89 of the Education and Inspections Act 2006 provides that maintained schools must have measures to encourage good behaviour and prevent all forms of bullying amongst pupils.

Under the Children Act 1989 a bullying incident should be addressed as a child protection concern when there is 'reasonable cause to suspect that a child is suffering, or is likely to suffer, significant harm'. Where this is the case, the school staff should follow the school's safeguarding procedures. Even where safeguarding is not considered to be an issue, schools may need to draw on a range of external services to support the pupil who is experiencing bullying, or to tackle any underlying issue which has contributed to a child engaging in bullying.

In line with the Equality Act 2010 it is essential that our school: Eliminates unlawful discrimination, harassment, victimisation and any other conduct prohibited by the Act; advance equality of opportunity between people who share a protected characteristic and people who do not share it; and foster good relations between people who share a protected characteristic and people who do not share it.

2. Aims

We aim to

- Maintain an ethos of respect for all, which discourages bullying and unpleasant behaviour towards other pupils in this school.
- Treat any reports of bullying seriously and investigate them carefully.
- Deal with any incidents in a proactive and sensitive way to avoid increasing any distress felt by bullied pupils.
- Work closely with parents to help to deal with any incidents which arise.
- Develop an ethos where children to tell someone when they, or someone else, are bullied.

At Ferry Lane Primary School we are committed to providing a warm, caring and safe environment for all our children so that they can learn and play in a relaxed and secure environment. Bullying of any kind is unacceptable and will not be tolerated in our school.

3. Definition

There is no legal definition of bullying. However, it's usually defined as behaviour that is:

- repeated
- intended to hurt someone either physically or emotionally
- often aimed at certain groups, eg because of race, religion, gender or sexual orientation

Bullying can be:

- Emotional hurt
- Physical hurt
- Racial hurt
- Sexual hurt
- Homophobic hurt
- Verbal hurt
- Cyber bullying

4. Signs and symptoms which may be noticed

- Change of friendship groups
- Lack of friends
- Unwilling to go to school
- "Illness" at certain times of the day
- Change in standard of work
- Withdrawn/sudden lack of confidence
- Severe cases of depression
- Begins truanting
- Has unexplained cuts or bruises
- Becomes aggressive, disruptive or unreasonable
- Problems sleeping or bed wetting
- Gives improbable excuses for any of the above.

5. Strategies

When dealing with any problems we will use a variety of strategies which suit the situation and the children involved. These will include some of the following:

- Increase vigilance of all adults involved with the child/ren.

- Logging of all incidents of concern
- Adopt a no-blame approach to encourage all children to talk about events.
- Listen to children when they tell us about problems.
- Talk with parents of children involved and enlist their support when dealing with issues.
- Where a child is being deliberately aggressive, remove them from the playground or classroom so that others can enjoy their break or lessons. Then gradually re-introduce the child to the playground or classroom, monitoring their progress carefully.
- Develop some clear behaviour modification strategies for the perpetrator (sanctions and rewards)
- Involve other children in supporting the child who feels threatened – buddy system.
- Use of the learning mentor/HLTA to discuss bullying and strategies for dealing with it (whole classes or groups and individuals).
- Deliver units of work on bullying in PSHE and the use of circle time throughout school to discuss issues and raise self-esteem.
- If necessary the imposition of fixed term exclusions for those who are bullying others.

6. Advice for parents

If you think your child is being bullied:

- Encourage your child to talk about it, but be patient as she or he may be distressed.
- Stay calm but show that you are supportive and working with the school to solve the problem.
- Avoid dwelling on sensitive issues and asking leading questions.
- Reassure your child that you are sympathetic and will do something about it.
- Explain that it happens to many people at some time or another.
- Try to help him or her to see the difficulty as a problem that can be solved.
- Ask your child if they can see ways of changing things.

Discuss your concerns with us in the following way;

- Firstly make an appointment to speak to your child's teacher, at the meeting outline your concerns. Arrange to meet again in 24 to 48 hours so that the teacher can talk to the child/children involved and then let you know what he/she has found out and is proposing to do.
- If after a few more days you do not think the issue has been resolved, make an appointment to speak to one of our senior leaders. Explain your concerns; explain what actions have been taken so far and the issues that your child is still experiencing.

- The senior leader will look into it and report back to you within 24 to 48 hours. They will inform you of the outcomes of their investigations into the matter, these may include, but are not limited to;
 - Sanctions and support for the perpetrator
 - The involvement of parents of perpetrators and or victims
 - Support for the victim in terms of strategies and reporting arrangements
 - Whole class circle times and work around friendships

7. Associated Policies

The following policies provide guidance on matters which may relate to bullying and should be read in conjunction with this policy;

- Behaviour
- E.Safety
- Safeguarding and Child Protection
- Complaints Policy

8. Monitoring

All serious incidents of unacceptable behaviour, including bullying, are reported to the SLT and parents will be contacted to come into school and discuss the incidents. All incidents of bullying are recorded so that patterns can be identified.

Governors will be informed in part 2 of governing body meetings of any reported incidences of bullying and any incidents where fixed term exclusion has been imposed.

9. Supporting Organisations and Guidance

- Anti-Bullying Alliance: www.anti-bullyingalliance.org.uk
- Beat Bullying: www.beatbullying.org
- Childline: www.childline.org.uk
- DfE: “Preventing and Tackling Bullying. Advice for headteachers, staff and governing bodies”, and “Supporting children and young people who are bullied: advice for schools” March 2014: <https://www.gov.uk/government/publications/preventing-and-tackling-bullying>
- DfE: “No health without mental health”: <https://www.gov.uk/government/publications/no-health-without-mental-health-a-cross-government-outcomes-strategy>

- Family Lives: www.familylives.org.uk
- Kidscape: www.kidscape.org.uk
- MindEd: www.minded.org.uk
- NSPCC: www.nspcc.org.uk
- PSHE Association: www.pshe-association.org.uk
- Restorative Justice Council: www.restorativejustice.org.uk
- The Diana Award: www.diana-award.org.uk
- Victim Support: www.victimsupport.org.uk
- Young Minds: www.youngminds.org.uk
- Young Carers: www.youngcarers.net

Cyberbullying

- Childnet International: www.childnet.com
- Digizen: www.digizen.org
- Internet Watch Foundation: www.iwf.org.uk
- Think U Know: www.thinkuknow.co.uk
- UK Safer Internet Centre: www.saferinternet.org.uk

LGBT

- EACH: www.eachaction.org.uk
- Pace: www.pacehealth.org.uk
- Schools Out: www.schools-out.org.uk
- Stonewall: www.stonewall.org.uk

SEND

- Changing Faces: www.changingfaces.org.uk
- Mencap: www.mencap.org.uk
- DfE: SEND code of practice: <https://www.gov.uk/government/publications/send-code-of-practice-0-to-25>

Racism and Hate

- Anne Frank Trust: www.annefrank.org.uk
- Kick it Out: www.kickitout.org
- Report it: www.report-it.org.uk
- Stop Hate: www.stophateuk.org
- Show Racism the Red Card: www.srtrc.org/educational

LGFL School Online Safety Policy Template

This policy is part of the School's Statutory Safeguarding Policy. Any issues and concerns with online safety must follow the school's safeguarding and child protection processes.

Contents

1. Introduction and Overview

- Rationale and Scope
- Roles and responsibilities
- How the policy is communicated to staff/pupils/community
- Handling complaints
- Reviewing and Monitoring

2. Education and Curriculum

- Pupil online safety curriculum
- Staff and governor training
- Parent awareness and training

3. Expected Conduct and Incident Management

4. Managing the IT Infrastructure

- Internet access, security (virus protection) and filtering
- Network management (user access, backup, curriculum and admin)
- Passwords policy
- E-mail
- School website
- Learning platform
- Social networking
- Video Conferencing

5. Data Security

- Management Information System access
- Data transfer
- Asset Disposal

6. Equipment and Digital Content

- Personal mobile phones and devices

- Digital images and video

Appendices (separate documents):

- A1: Acceptable Use Agreement (Staff, Volunteers and Governors)
- A2: Acceptable Use Agreements (Pupils – adapted for phase)
- A3: Acceptable Use Agreement including photo/video permission (Parents)
- A4: Protocol for responding to online safety incidents
<http://www.lgfl.net/esafety/Pages/policies-acceptable-use.aspx> - handling infringements
<http://www.digitallyconfident.org/images/resources/first-line-information-support-HQ.pdf> - page 23 onwards
- A5: Prevent: Radicalisation and Extremism
- A6: Data security: Use of IT systems and Data transfer
Search and Confiscation guidance from DfE
<https://www.gov.uk/government/publications/searching-screening-and-confiscation>

E-Safety

1. Introduction and Overview

Rationale

The purpose of this policy is to:

- Set out the key principles expected of all members of the school community at Ferry Lane Primary School with respect to the use of IT-based technologies.
- Safeguard and protect the children and staff.
- Assist school staff working with children to work safely and responsibly with the Internet and other IT and communication technologies and to monitor their own standards and practice.
- Set clear expectations of behaviour and/or codes of practice relevant to responsible use of the Internet for educational, personal or recreational use for the whole school community.
- Have clear structures to deal with online abuse such as online bullying [noting that these need to be cross referenced with other school policies].
- Ensure that all members of the school community are aware that unlawful or unsafe behaviour is unacceptable and that, where appropriate, disciplinary or legal action will be taken.
- Minimise the risk of misplaced or malicious allegations made against adults who work with students.

The main areas of risk for our school community can be summarised as follows:

Content

- Exposure to inappropriate content
- Lifestyle websites promoting harmful behaviours
- Hate content
- Content validation: how to check authenticity and accuracy of online content

Contact

- Grooming (sexual exploitation, radicalisation etc.)

- Online bullying in all forms
- Social or commercial identity theft, including passwords

Conduct

- Aggressive behaviours (bullying)
- Privacy issues, including disclosure of personal information
- Digital footprint and online reputation
- Health and well-being (amount of time spent online, gambling, body image)
- Sexting
- Copyright (little care or consideration for intellectual property and ownership)

Scope

This policy applies to all members of Ferry Lane Primary School community (including staff, students/pupils, volunteers, parents/carers, visitors, community users) who have access to and are users of school IT systems, both in and out of Ferry Lane Primary School.

Roles and responsibilities

Role	Key Responsibilities
Headteacher	<ul style="list-style-type: none"> • Must be adequately trained in off-line and online safeguarding, in-line with statutory guidance and relevant Local Safeguarding Children Board (LSCB) guidance • To lead a 'safeguarding' culture, ensuring that online safety is fully integrated with whole school safeguarding. • To take overall responsibility for online safety provision • To take overall responsibility for data management and information security (SIRO) ensuring school's provision follows best practice in information handling • To ensure the school uses appropriate IT systems and services including, filtered Internet Service, e.g. LGfL services • To be responsible for ensuring that all staff receive suitable training to carry out their safeguarding and online safety roles • To be aware of procedures to be followed in the event of a serious online safety incident • Ensure suitable 'risk assessments' undertaken so the curriculum meets needs of pupils, including risk of children being radicalised

Role	Key Responsibilities
	<ul style="list-style-type: none"> • To receive regular monitoring reports from the Online Safety Co-ordinator • To ensure that there is a system in place to monitor and support staff who carry out internal online safety procedures, e.g. network manager • To ensure Governors are regularly updated on the nature and effectiveness of the school's arrangements for online safety • To ensure school website includes relevant information.
<p>Online Safety Co-ordinator/Designated Child Protection Lead (This may be the same person)</p>	<ul style="list-style-type: none"> • Take day to day responsibility for online safety issues and a leading role in establishing and reviewing the school's online safety policy/documents • Promote an awareness and commitment to online safety throughout the school community • Ensure that online safety education is embedded within the curriculum • Liaise with school technical staff where appropriate • To communicate regularly with SLT and the designated online safety Governor/committee to discuss current issues, review incident logs and filtering/change control logs • To ensure that all staff are aware of the procedures that need to be followed in the event of an online safety incident • To ensure that online safety incidents are logged as a safeguarding incident • Facilitate training and advice for all staff • Oversee any pupil surveys / pupil feedback on online safety issues • Liaise with the Local Authority and relevant agencies • Is regularly updated in online safety issues and legislation, and be aware of the potential for serious child protection concerns.
<p>Governors/Safeguarding governor (including online safety)</p>	<ul style="list-style-type: none"> • To ensure that the school has in place policies and practices to keep the children and staff safe online • To approve the Online Safety Policy and review the effectiveness of the policy • To support the school in encouraging parents and the wider community to become engaged in online safety activities

Role	Key Responsibilities
	<ul style="list-style-type: none"> • The role of the online safety Governor will include: regular review with the online safety Co-ordinator.
Computing Curriculum Leader	<ul style="list-style-type: none"> • To oversee the delivery of the online safety element of the Computing curriculum
Network Manager/technician	<ul style="list-style-type: none"> • To report online safety related issues that come to their attention, to the Online Safety Coordinator • To manage the school's computer systems, ensuring <ul style="list-style-type: none"> - school password policy is strictly adhered to. - systems are in place for misuse detection and malicious attack (e.g. keeping virus protection up to date) - access controls/encryption exist to protect personal and sensitive information held on school-owned devices - the school's policy on web filtering is applied and updated on a regular basis • That they keep up to date with the school's online safety policy and technical information in order to effectively carry out their online safety role and to inform and update others as relevant • That the use of school technology and online platforms are regularly monitored and that any misuse/attempted misuse is reported to the online safety co-ordinator/Headteacher • To ensure appropriate backup procedures and disaster recovery plans are in place • To keep up-to-date documentation of the school's online security and technical procedures
Data and Information (Asset Owners) Managers (IAOs)	<ul style="list-style-type: none"> • To ensure that the data they manage is accurate and up-to-date • Ensure best practice in information management. i.e. have appropriate access controls in place, that data is used, transferred and deleted in-line with data protection requirements. • The school must be registered with Information Commissioner
LGfL Nominated contact(s)	<ul style="list-style-type: none"> • To ensure all LGfL services are managed on behalf of the school following data handling procedures as relevant
Teachers	<ul style="list-style-type: none"> • To embed online safety in the curriculum • To supervise and guide pupils carefully when engaged in learning activities involving online technology (including, extra-curricular and extended school activities if relevant) • To ensure that pupils are fully aware of research skills and are fully aware of legal issues relating to electronic content such as copyright laws

Role	Key Responsibilities
All staff, volunteers and contractors.	<ul style="list-style-type: none"> • To read, understand, sign and adhere to the school staff Acceptable Use Agreement/Policy, and understand any updates annually. The AUP is signed by new staff on induction. • To report any suspected misuse or problem to the online safety coordinator • To maintain an awareness of current online safety issues and guidance e.g. through CPD • To model safe, responsible and professional behaviours in their own use of technology <p>Exit strategy</p> <ul style="list-style-type: none"> • At the end of the period of employment/volunteering to return any equipment or devices loaned by the school. This will include leaving PIN numbers, IDs and passwords to allow devices to be reset, or meeting with line manager and technician on the last day to log in and allow a factory reset.
Pupils	<ul style="list-style-type: none"> • Read, understand, sign and adhere to the Student/Pupil Acceptable Use Policy annually • To understand the importance of reporting abuse, misuse or access to inappropriate materials • To know what action to take if they or someone they know feels worried or vulnerable when using online technology • To understand the importance of adopting safe behaviours and good online safety practice when using digital technologies out of school and realise that the school's online safety policy covers their actions out of school • To contribute to any 'pupil voice' / surveys that gathers information of their online experiences
Parents/carers	<ul style="list-style-type: none"> • To read, understand and promote the school's Pupil Acceptable Use Agreement with their child/ren • to consult with the school if they have any concerns about their children's use of technology • to support the school in promoting online safety and endorse the Parents' Acceptable Use Agreement which includes the pupils' use of the Internet and the school's use of photographic and video images
External groups including Parent groups	<ul style="list-style-type: none"> • Any external individual/organisation will sign an Acceptable Use agreement prior to using technology or the Internet within school

Role	Key Responsibilities
	<ul style="list-style-type: none">• to support the school in promoting online safety• To model safe, responsible and positive behaviours in their own use of technology.

Communication:

The policy will be communicated to staff/pupils/community in the following ways:

- Policy to be posted on the school website and public drive.
- Policy to be part of school induction pack for new staff.
- Regular updates and training on online safety for all staff.
- Acceptable use agreements discussed with staff and pupils at the start of each year. Acceptable use agreements to be issued to whole school community, on entry to the school.

Handling Incidents:

- The school will take all reasonable precautions to ensure online safety.
- Staff and pupils are given information about infringements in use and possible sanctions.
- Online Safety Coordinator acts as first point of contact for any incident.
- Any suspected online risk or infringement is reported to Online Safety Coordinator that day
- Any concern about staff misuse is always referred directly to the Headteacher, unless the concern is about the Headteacher in which case the complaint is referred to the Chair of Governors and the LADO (Local Authority's Designated Officer).

Review and Monitoring

The online safety policy is referenced within other school policies (e.g. Safeguarding and Child Protection policy, Anti-Bullying policy, PSHE, Computing policy).

- The online safety policy will be reviewed annually or when any significant changes occur with regard to the technologies in use within the school
- There is widespread ownership of the policy and it has been agreed by the SLT and approved by Governors. All amendments to the school online safety policy will be disseminated to all members of staff and pupils.

2. Education and Curriculum

Pupil online safety curriculum

This school:

- has a clear, progressive online safety education programme as part of the Computing curriculum/PSHE and other curriculum areas as relevant. This covers a range of skills and behaviours appropriate to their age and experience;
- plans online use carefully to ensure that it is age-appropriate and supports the learning objectives for specific curriculum areas;
- will remind students about their responsibilities through the pupil Acceptable Use Agreement(s);
- ensures staff are aware of their responsibility to model safe and responsible behaviour in their own use of technology, e.g. use of passwords, logging-off, use of content, research skills, copyright;
- ensures that staff and pupils understand issues around plagiarism; how to check copyright and also know that they must respect and acknowledge copyright/intellectual property rights;
- ensure pupils only use school-approved systems and publish within appropriately secure / age-appropriate environments.

Staff and governor training

This school:

- makes regular training available to staff on online safety issues and the school's online safety education program;
- provides, as part of the induction process, all new staff [including those on university/college placement and work experience] with information and guidance on the Online Safety Policy and the school's Acceptable Use Agreements.

Parent awareness and training

This school:

- provides induction for parents which includes online safety;
- runs a rolling programme of online safety advice, guidance and training for parents.

3. Expected Conduct and Incident management

Expected conduct

In this school, all users:

- are responsible for using the school IT and communication systems in accordance with the relevant Acceptable Use Agreements;
- understand the significance of misuse or access to inappropriate materials and are aware of the consequences;
- understand it is essential to reporting abuse, misuse or access to inappropriate materials and know how to do so;
- understand the importance of adopting good online safety practice when using digital technologies in and out of school;
- know and understand school policies on the use of mobile and hand held devices including cameras;

Staff, volunteers and contractors

- know to be vigilant in the supervision of children at all times, as far as is reasonable, and uses common-sense strategies in learning resource areas where older pupils have more flexible access;
- know to take professional, reasonable precautions when working with pupils, previewing websites before use; using age-appropriate (pupil friendly) search engines where more open Internet searching is required with younger pupils;

Parents/Carers

- should provide consent for pupils to use the Internet, as well as other technologies, as part of the online safety acceptable use agreement form;
- should know and understand what the school's 'rules of appropriate use for the whole school community' are and what sanctions result from misuse.

Incident Management

In this school:

- there is strict monitoring and application of the online safety policy and a differentiated and appropriate range of sanctions;
- all members of the school are encouraged to be vigilant in reporting issues, in the confidence that issues will be dealt with quickly and sensitively, through the school's escalation processes;
- support is actively sought from other agencies as needed (i.e. the local authority, LGfL, UK Safer Internet Centre helpline, CEOP, Prevent Officer, Police, IWF) in dealing with online safety issues;
- monitoring and reporting of online safety incidents takes place and contribute to developments in policy and practice in online safety within the school;
- parents/carers are specifically informed of online safety incidents involving young people for whom they are responsible;
- the Police will be contacted if one of our staff or pupils receives online communication that we consider is particularly disturbing or breaks the law;
- we will immediately refer any suspected illegal material to the appropriate authorities – Police, Internet Watch Foundation and inform the LA.

4. Managing IT and Communication System

Internet access, security (virus protection) and filtering

This school:

- informs all users that Internet/email use is monitored;
- has the educational filtered secure broadband connectivity through the LGfL;
- uses the LGfL filtering system which blocks sites that fall into categories (e.g. adult content, race hate, gaming). All changes to the filtering policy are logged and only available to staff with the approved 'web filtering management' status;
- uses USO user-level filtering where relevant;
- ensures network health through use of Sophos anti-virus software (from LGfL);
- Uses DfE, LA or LGfL approved systems including DfE S2S, LGfL USO FX2, Egress secure file/email to send 'protect-level' (sensitive personal) data over the Internet
- Uses encrypted devices or secure remote access where staff need to access 'protect-level' (sensitive personal) data off-site;
- Works in partnership with the LGfL to ensure any concerns about the system are communicated so that systems remain robust and protect students.

Network management (user access, backup)

This school

- Uses individual, audited log-ins for all users
- Uses guest accounts occasionally for external or short term visitors for temporary access to appropriate services;
- Ensures the Systems Administrator/network manager is up-to-date with LGfL services and policies/requires the Technical Support Provider to be up-to-date with LGfL services and policies;
- Has weekly back-up of school data (admin and curriculum);
- Uses secure, 'Cloud' storage for data back-up that conforms to [DfE guidance](#);
- Storage of all data within the school will conform to the EU and UK data protection requirements; Storage of data online, will conform to the [EU data protection directive](#) where storage is hosted within the EU.

To ensure the network is used safely, this school:

- Ensures staff read and sign that they have understood the school's online safety Policy. Following this, they are set-up with Internet, email access and network access. Online access to service is through a unique, audited username and password. We also provide a different username and password for access to our school's network.
- All pupils have their own unique username and password which gives them access to the Internet and other services;
- Makes clear that no one should log on as another user and makes clear that pupils should never be allowed to log-on or use teacher and staff logins;
- Has set-up the network with a shared work area for pupils and one for staff. Staff and pupils are shown how to save work and access work from these areas;
- Requires all users to log off when they have finished working or are leaving the computer unattended;
- Ensures all equipment owned by the school and/or connected to the network has up to date virus protection;
- Makes clear that staff are responsible for ensuring that any computer or laptop loaned to them by the school, is used primarily to support their professional responsibilities.
- Makes clear that staff accessing LA systems do so in accordance with any Corporate policies;
e.g. Borough email or Intranet; finance system, Personnel system etc.
- Maintains equipment to ensure Health and Safety is followed;
- Ensures that access to the school's network resources from remote locations by staff is audited and restricted and access is only through school/LA approved systems:

- Does not allow any outside Agencies to access our network remotely except where there is a clear professional need and then access is audited restricted and is only through approved systems;
- Has a clear disaster recovery system in place that includes a secure, remote off site back up of data;
- This school uses secure data transfer; this includes DfE secure S2S website for all CTF files sent to other schools;
- Ensures that all pupil level data or personal data sent over the Internet is encrypted or only sent within the approved secure system in our LA or through USO secure file exchange (USO FX);
- Our wireless network has been secured to industry standard Enterprise security level /appropriate standards suitable for educational use;
- All IT and communications systems installed professionally and regularly reviewed to ensure they meet health and safety standards;

Password policy

- This school makes it clear that staff and pupils must always keep their passwords private, must not share with others; If a password is compromised the school should be notified immediately.
- All staff have their own unique username and private passwords to access school systems. Staff are responsible for keeping their password(s) private.
- We require staff to use STRONG passwords.
- We require staff to change their passwords into the MIS, LGfL USO admin site, every 90 days/twice a year.
- We require staff using critical systems to use two factor authentication.

E-mail

This school

- Provides staff with an email account for their professional use, London Staffmail/LA email and makes clear personal email should be through a separate account;
- We use anonymous or group e-mail addresses, for example info@schoolname.la.sch.uk/head@schoolname.la.sch.uk/or class e-mail addresses.
- Will contact the Police if one of our staff or pupils receives an e-mail that we consider is particularly disturbing or breaks the law.
- Will ensure that email accounts are maintained and up to date
- We use a number of LGfL-provided technologies to help protect users and systems in the school, including desktop anti-virus product Sophos, plus direct email filtering for viruses.

Pupils:

- We use LGfL pupil email system which are intentionally ‘anonymised’ for pupil protection.
- Pupils are taught about the online safety and ‘netiquette’ of using e-mail both in school and at home.

Staff:

- Staff can only use the LA or LGfL e mail systems on the school system
- Staff will use LA or LGfL e-mail systems for professional purposes
- Access in school to external personal e mail accounts may be blocked
- Never use email to transfer staff or pupil personal data. ‘Protect-level’ data should never be transferred by email. If there is no secure file transfer solution available for the situation, then the data / file must be protected with security encryption.

School website

- The Headteacher, supported by the Governing body, takes overall responsibility to ensure that the website content is accurate and the quality of presentation is maintained;
- The school web site complies with statutory DFE requirements;
- Most material is the school’s own work; where other’s work is published or linked to, we credit the sources used and state clearly the author's identity or status;
- Photographs published on the web do not have full names attached. We do not use pupils’ names when saving images in the file names or in the tags when publishing to the school website;

Cloud Environments

- We use Google Drive. Uploading of information on the schools’ online learning space is shared between different staff members according to their responsibilities e.g. all class teachers upload information in their class areas;
- Photographs and videos uploaded to the school’s online environment will only be accessible by members of the school community;
- In school, pupils are only able to upload and publish within school approved ‘Cloud’ systems.

Social networking (see also Social media Policy)

Staff, Volunteers and Contractors

- Staff are instructed to always keep professional and private communication separate.
- Teachers are instructed not to run social network spaces for student use on a personal basis or to open up their own spaces to their students, but to use the schools' preferred system for such communications.
- for the use of any school approved social networking will adhere to school's communications policy.

School staff will ensure that in private use:

- No reference should be made in social media to students/pupils, parents/carers or school staff;
- School staff should not be online friends with any pupil/student. Any exceptions must be approved by the Headteacher.
- They do not engage in online discussion on personal matters relating to members of the school community;
- Personal opinions should not be attributed to the school /academy or local authority and personal opinions must not compromise the professional role of the staff member, nor bring the school into disrepute;
- Security settings on personal social media profiles are regularly checked to minimise risk of loss of personal information.

Pupils:

- Are taught about social networking, acceptable behaviours and how to report misuse, intimidation or abuse through our online safety curriculum work.
- Students are required to sign and follow our [age appropriate] pupil Acceptable Use Agreement.

Parents:

- Parents are reminded about social networking risks and protocols through our parental Acceptable Use Agreement and additional communications materials when required.
- Are reminded that they need to ask permission before uploading photographs, videos or any other information about other people.

CCTV

- We have CCTV in the school as part of our site surveillance for staff and student safety. The use of CCTV is clearly signposted in the school. We will not reveal any recordings without appropriate permission.

- We use specialist lesson recording equipment on occasions as a tool to share best teaching practice. We do not reveal any such recordings outside of the staff and will not use for any other purposes.

5. Data security: Management Information System access and Data transfer

Strategic and operational practices

At this school:

- The Head Teacher is the Senior Information Risk Officer (SIRO).
- Staff are clear who are the key contact(s) for key school information (the Information Asset Owners) are. We have listed the information and information asset owners.
- We ensure staff know who to report any incidents where data protection may have been compromised.
- All staff are DBS checked and records are held in a single central record

Technical Solutions

- Staff have secure area(s) on the network to store sensitive files.
- We require staff to log-out of systems when leaving their computer, but also enforce lock-out after 10 minutes idle time.
- We use the LGfL USO AutoUpdate, for creation of online user accounts for access to broadband services and the LGfL content.
- All servers are in lockable locations and managed by DBS-checked staff.
- Details of all school-owned hardware will be recorded in a hardware inventory.
- Details of all school-owned software will be recorded in a software inventory.
- Disposal of any equipment will conform to [The Waste Electrical and Electronic Equipment Regulations 2006](#) and/or [The Waste Electrical and Electronic Equipment \(Amendment\) Regulations 2007](#). [Further information](#) can be found on the Environment Agency website.
- Where any protected or restricted data has been held we get a certificate of secure deletion for any server that once contained personal data.
- We are using secure file deletion software.

6. Equipment and Digital Content

Mobile Devices (Mobile phones, tablets and other mobile devices)

- All pupil's mobile devices will be handed in at reception should they be brought into school.
- Personal mobile devices will not be used during lessons or formal school time unless as part of an approved and directed curriculum-based activity with consent from Headteacher / SLT.
- No images or videos should be taken on mobile devices without the prior consent of the person or people concerned.
- The recording, taking and sharing of images, video and audio on any personal mobile device is to be avoided, except where it has been explicitly agreed by the Head teacher. Such authorised use is to be recorded. All mobile device use is to be open to monitoring scrutiny and the Head teacher is able to withdraw or restrict authorisation for use at any time, if it is deemed necessary.
- If a student needs to contact his or her parents or carers, they will be allowed to use a school phone. Parents are advised not to contact their child via their mobile phone during the school day, but to contact the school office.
- Staff may use their phones during break times. If a staff member is expecting a personal call they may leave their phone with the school office to answer on their behalf, or seek specific permissions to use their phone at other than their break times.

Storage, Synching and Access

The device is accessed with a school owned account

- The device has a school created account and all apps and file use is in line with this policy. No personal elements may be added to this device.
- PIN access to the device must always be known by the network manager.

The device is accessed with a personal account

- If personal accounts are used for access to a school owned mobile device, staff must be aware that school use will be synched to their personal cloud, and personal use may become visible in school and in the classroom.
- PIN access to the device must always be known by the network manager.
- Exit process – when the device is returned the staff member must log in with personal ID so that the device can be Factory Reset and cleared for reuse.

Students' use of personal devices

- The School strongly advises that student mobile phones and devices should not be brought into school.

- The School accepts that there may be particular circumstances in which a parent wishes their child to have a mobile phone for their own safety.
- If a student breaches the school policy, then the device will be confiscated and will be held in a secure place in the school office. Mobile devices will be released to parents or carers in accordance with the school policy.
- Phones and devices must not be taken into examinations. Students found in possession of a mobile device during an exam will be reported to the appropriate examining body. This may result in the student's withdrawal from either that examination or all examinations.
- Students should protect their phone numbers by only giving them to trusted friends and family members. Students will be instructed in safe and appropriate use of mobile phones and personally-owned devices and will be made aware of boundaries and consequences.
- Students will be provided with school mobile phones to use in specific learning activities under the supervision of a member of staff. Such mobile phones will be set up so that only those features required for the activity will be enabled.

Staff use of personal devices

- Staff handheld devices, including mobile phones and personal cameras must be noted in school – name, make & model, serial number. Any permitted images or files taken in school must be downloaded from the device and deleted in school before the end of the day.
- Staff are not permitted to use their own mobile phones or devices in a professional capacity, such as for contacting children, young people or their families within or outside of the setting.
- Staff will be issued with a school phone where contact with students, parents or carers is required, for instance for off-site activities.
- Mobile Phones and personally-owned devices will be switched off or switched to 'silent' mode. Bluetooth communication should be 'hidden' or switched off and mobile phones or personally-owned devices will not be used during teaching periods unless permission has been granted by a member of the senior leadership team in emergency circumstances.
- If members of staff have an educational reason to allow children to use mobile phones or a personally-owned device as part of an educational activity, then it will only take place when approved by the senior leadership team.
- Staff should not use personally-owned devices, such as mobile phones or cameras, to take photos or videos of students and will only use work-provided equipment for this purpose.
- In an emergency where a staff member doesn't have access to a school-owned device, they should use their own device and hide (by inputting 141) their own

mobile number for confidentiality purposes and then report the incident with the Headteacher / Designated Officer.

- If a member of staff breaches the school policy then disciplinary action may be taken.

Digital images and video

In this school:

- We gain parental/carer permission for use of digital photographs or video involving their child as part of the school agreement form when their daughter/son joins the school (or annually).;
- We do not identify pupils in online photographic materials or include the full names of pupils in the credits of any published school produced video materials/DVDs;
- Staff sign the school's Acceptable Use Policy and this includes a clause on the use of mobile phones/personal equipment for taking pictures of pupils;
- If specific pupil photos (not group photos) are used on the school web site, in the prospectus or in other high profile publications the school will obtain individual parental or pupil permission for its long term, high profile use
- The school blocks/filter access to social networking sites unless there is a specific approved educational purpose;
- Pupils are taught about how images can be manipulated in their online safety education programme and also taught to consider how to publish for a wide range of audiences which might include governors, parents or younger children as part of their computing scheme of work;
- Pupils are advised to be very careful about placing any personal photos on any 'social' online network space. They are taught to understand the need to maintain privacy settings so as not to make public, personal information.
- Pupils are taught that they should not post images or videos of others without their permission. We teach them about the risks associated with providing information with images (including the name of the file), that reveals the identity of others and their location. We teach them about the need to keep their data secure and what to do if they are subject to bullying or abuse.

Acceptable Use Agreement: All Staff, Volunteers and Governors
--

Covers use of all digital technologies in school: i.e. email, Internet, intranet, network resources, learning platform, software, communication tools, equipment and systems.

- I will only use the school's digital technology resources and systems for Professional purposes or for uses deemed 'reasonable' by the Head and Governing Body.
- I will not reveal my password(s) to anyone.
- I will follow 'good practice' advice in the creation and use of my password. If my password is compromised, I will ensure I change it. I will not use anyone else's password if they reveal it to me and will advise them to change it.
- I will not allow unauthorised individuals to access email / Internet / intranet / network, or other school systems, *or any Local Authority (LA) system I have access to.*
- I will ensure all documents, data etc., are printed, saved, accessed and deleted / shredded in accordance with the school's network and data security protocols.
- I will not engage in any online activity that may compromise my professional responsibilities.
- I will only use the approved email system(s) for any school business.
This is currently: [*LGfL StaffMail/ name system*]
- I will only use the approved [*email system (London Mail/ TrustMail), Learning Platform (XXX) and school approved communication systems*] with pupils or parents/carers, and only communicate with them on appropriate school business.
- I will not browse, download or send material that is considered offensive or of an extremist nature by the school.
- I will report any accidental access to, or receipt of inappropriate materials, or filtering breach or equipment failure to the *appropriate line manager / school named contact.*
- I will not download any software or resources from the Internet that can compromise the network or might allow me to bypass the filtering and security system or are not adequately licensed.
- I will check copyright and not publish or distribute any work including images, music and videos, that is protected by copyright without seeking the author's permission.
- I will not connect any device (including USB flash drive), to the network that does not have up-to-date anti-virus software, and I will keep any 'loaned' equipment up-

to-date, using the school's *recommended anti-virus and other ICT 'defence' systems.*

- I will not use personal digital cameras or camera phones or digital devices for taking, editing and transferring images or videos of pupils or staff and will not store any such images or videos at home.
- I will follow the school's policy on use of mobile phones / devices at school and *will not take into classrooms / only use in staff areas / only use when XXX.*
- I will only use school approved equipment for any storage, editing or transfer of digital images / videos and ensure I only save photographs and videos of children and staff on the *appropriate system or staff-only drive within school.*
- I will use the school's Learning Platform in accordance with school protocols.
- I will ensure that any private social networking sites / blogs etc that I create or actively contribute to are not confused with my professional role.
- I will ensure, where used, I know how to use any social networking sites / tools securely, so as not to compromise my professional role.
- I agree and accept that any computer or laptop loaned to me by the school, is provided solely to support my professional responsibilities and that I will notify the school of any "significant personal use" as defined by HM Revenue & Customs.
- I will only access school resources remotely (such as from home) using the *LGfL/ school approved system* and follow e-security protocols to interact with them.
- I will ensure any confidential data that I wish to transport from one location to another is protected by encryption and that I follow school data security protocols when using any such data at any location.
- I understand that data protection policy requires that any information seen by me with regard to staff or pupil information, held within the school's information management system, will be kept private and confidential, EXCEPT when it is deemed necessary that I am required by law to disclose such information to an appropriate authority.
- I will alert [*the schools named*] child protection officer / appropriate senior member of staff if I feel the behaviour of any child may be a cause for concern.
- I understand it is my duty to support a whole-school safeguarding approach and will report any behaviour of other staff or pupils, which I believe may be inappropriate or concerning in any way, to *senior member of staff / designated Child Protection lead.*
- I understand that all Internet and network traffic / usage can be logged and this information can be made available *to the Head / Safeguarding Lead* on their request.
- I understand that Internet encrypted content (via the https protocol), may be scanned for security and/or safeguarding purposes.
- *I will only use any LA system I have access to in accordance with their policies.*

- *Staff that have a teaching role only:* I will embed the school's on-line safety / digital literacy / counter extremism curriculum into my teaching.

I agree to abide by all the points above.

I understand that I have a responsibility for my own and others e-safeguarding and I undertake to be a 'safe and responsible digital technologies user'.

I understand that it is my responsibility to ensure that I remain up-to-date and read and understand the school's most recent e-safety policies.

I understand that failure to comply with this agreement could lead to disciplinary action.

Signature Date

Full Name (printed)

Authorised Signature (Head Teacher / Deputy)

I approve this user to be set-up on the school systems relevant to their role

Signature

Date

KS2 Pupil Acceptable Use Agreement

These rules will keep me safe and help me to be fair to others.

- I will only use the school's computers for schoolwork and homework.
- I will only edit or delete my own files and not look at, or change, other people's files without their permission.
- I will keep my logins and passwords secret.
- I will not bring files into school without permission or upload inappropriate material to my workspace.
- I am aware that some websites and social networks have age restrictions and I should respect this.
- I will not attempt to visit Internet sites that I know to be banned by the school.
- I will only e-mail people I know, or a responsible adult has approved.
- The messages I send, or information I upload, will always be polite and sensible.
- I will not open an attachment, or download a file, unless I know and trust the person who has sent it.
- I will not give my home address, phone number, send a photograph or video, or give any other personal information that could be used to identify me, my family or my friends, unless a trusted adult has given permission. I will never arrange to meet someone I have only ever previously met on the Internet, unless my parent/carer has given me permission and I take a responsible adult with me.
- If I see anything I am unhappy with or I receive a message I do not like, I will not respond to it but I will show a teacher / responsible adult.

I have read and understand these rules and agree to them.

Signed:

Date:

Online Safety agreement form: parents

Internet and ICT: As the parent or legal guardian of the pupil(s) named below, I grant permission for the school to give my daughter / son access to:

- the Internet at school
- the school's chosen email system
- the school's online managed learning environment
- ICT facilities and equipment at the school.

I accept that ultimately the school cannot be held responsible for the nature and content of materials accessed through the Internet and mobile technologies, but I understand that the school takes every reasonable precaution to keep pupils safe and to prevent pupils from accessing inappropriate materials.

I understand that the school can, if necessary, check my child's computer files and the Internet sites they visit at school and if there are concerns about my child's e-safety or e-behaviour they will contact me.

Use of digital images, photography and video: I understand the school has a clear policy on "The use of digital images and video" and I support this.

I understand that the school will necessarily use photographs of my child or including them in video material to support learning activities

I accept that the school may use photographs / video that includes my child in publicity that reasonably promotes the work of the school, and for no other purpose.

I will not take and then share online, photographs of other children (or staff) at school events without permission.

Social networking and media sites: I understand that the school has a clear policy on "The use of social networking and media sites" and I support this.

I understand that the school takes any inappropriate behaviour seriously and will respond to observed or reported inappropriate or unsafe behaviour.

I will support the school by promoting safe use of the Internet and digital technology at home. I will inform the school if I have any concerns.

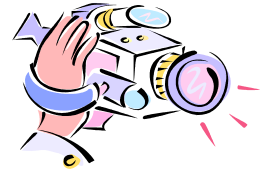


My daughter / son name(s): _____

Parent / guardian signature: _____

Date: ___/___/___

The use of digital images and video



To comply with the Data Protection Act 1998, we need your permission before we can photograph or make recordings of your daughter / son.

We follow the following rules for any external use of digital images:

If the pupil is named, we avoid using their photograph.

If their photograph is used, we avoid naming the pupil.

Where showcasing examples of pupils work we only use their first names, rather than their full names.

If showcasing digital video work to an external audience, we take care to ensure that pupils aren't referred to by name on the video, and that pupils' full names aren't given in credits at the end of the film.

Only images of pupils in suitable dress are used.

Staffs are not allowed to take photographs or videos on their personal equipment.

Examples of how digital photography and video may be used at school include:

- Your child being photographed (by the class teacher or teaching assistant) as part of a learning activity;
e.g. taking photos or a video of progress made by a nursery child, as part of the learning record, and then sharing with their parent / guardian.
- Your child's image being used for presentation purposes around the school;
e.g. in class or wider school wall displays or PowerPoint© presentations.
- Your child's image being used in a presentation about the school and its work in order to share its good practice and celebrate its achievements, which is shown to other parents, schools or educators;
e.g. within a CDROM / DVD or a document sharing good practice; in our school prospectus or on our school website.
In rare events, your child's picture could appear in the media if a newspaper photographer or television film crew attends an event.

Note: If we, or you, actually wanted your child's image linked to their name we would contact you separately for permission, e.g. if your child won a national competition and wanted to be named in local or government literature.

The use of social networking and on-line media



This school asks its whole community to promote the 3 commons approach to online behaviour:

- **Common courtesy**
- **Common decency**
- **Common sense**

How do we show common courtesy online?

- We ask someone's permission before uploading photographs, videos or any other information about them online.
- **We do not write or upload 'off-hand', hurtful, rude or derogatory comments and materials. To do so is disrespectful and may upset, distress, bully or harass.**

How do we show common decency online?

- We do not post comments that can be considered as being **intimidating, racist, sexist, homophobic or defamatory. This is cyber-bullying** and may be harassment or libel.
- When such comments exist online, we do not forward such emails, tweets, videos, etc. By creating or forwarding such materials we are all liable under the law.

How do we show common sense online?

- We think before we click.
- We think before we upload comments, photographs and videos.
- We think before we download or forward any materials.
- We think carefully about what information we share with others online, and we check where it is saved and check our privacy settings.
- We make sure we understand changes in use of any web sites we use.
- We block harassing communications and report any abuse.

Any actions online that impact on the school and can potentially lower the school's (or someone in the school) reputation in some way or are deemed as being inappropriate will be responded to.

In the event that any member of staff, student or parent/carer is found to be posting libellous or inflammatory comments on Facebook or other social network sites, they will be reported to the appropriate 'report abuse' section of the network site.

(All social network sites have clear rules about the content which can be posted on the site and they provide robust mechanisms to report contact or activity which breaches this.)

In serious cases we will also consider legal options to deal with any such misuse.

The whole school community is reminded of the CEOP report abuse process:
<https://www.thinkuknow.co.uk/parents/browser-safety/>

Use of Social Media

Contents

1. Introduction
2. The use of social networking sites by pupils within school
3. Use of social networking by staff in a personal capacity
4. Comments posted by parents/carers
5. Dealing with incidents of online bullying/inappropriate use of social networking sites
6. Further guidance and advice

Ferry Lane Primary School Use of Social media Policy

1. Introduction

Social media and social networking sites play an important role in the lives of many people. We recognise that sites bring risks, but equally there are many benefits to be reaped. This gives clarity to the way in which social media/mobile phones are to be used by pupils, governors, visitors, parent helpers and school staff at Ferry Lane Primary School. It will also provide guidance for parents.

This policy should be read in conjunction with the following policies

- Online safety policy and acceptable use agreements
- Safeguarding and child protection policy
- Anti bullying policy
- Behaviour policy

There are four key areas:

- The use of social networking sites by pupils within school
- Use of social networking by staff in a personal capacity
- Comments posted by parents/carers

- Dealing with incidents of online bullying

2. The use of social networking sites by pupils within school

The school's acceptable use agreements outline the rules for using IT in school and these rules therefore apply to use of social networking sites. Such sites should not be used/accessed in school unless under the direction of a teacher and for a purpose clearly apparent from the learning objective of the relevant learning experience. If social media sites are used then staff should carry out a risk assessment to determine which tools are appropriate. Social Media sites to be used in school include blogging sites and Twitter. Parents will give permission for children to access these sites in school as well as permission for images of their child / child's work to be included on the site. (See e-safety agreement form: parents – online safety policy)

In terms of private use of social networking sites by a child it is generally understood that children under the age of 13 are not permitted to be registered, including Facebook and Instagram to name two. Where it comes to the attention of staff that children under 13 have such accounts we will contact parents to inform them.

3. Use of social networking by staff in a personal capacity

It is possible that a high proportion of staff will have their own social networking site accounts. It is important for them to protect their professional reputation by ensuring that they use their personal accounts in an appropriate manner.

Guidelines are issued to staff:

- Staff must **never** add pupils as 'friends' into their personal accounts (including past pupils under the age of 16).
- Staff are **strongly advised** not to add parents as 'friends' into their personal accounts.
- Staff **must not** post comments about the school, pupils, parents or colleagues including members of the governing body.
- Staff must not use social networking sites within lesson times (for personal use).
- Staff should only use social networking in a way that does not conflict with the current national teacher's standards.
- Staff should review and adjust their privacy settings to give them the appropriate level of privacy and confidentiality.
- Staff should read and comply with 'Guidance for Safer Working Practice for Adults who Work with Children and Young People' (Safer Recruitment Consortium).
- Inappropriate use by staff should be referred to the Head teacher in the first instance and may lead to disciplinary action.

4. Comments posted by parents/carers

Parents and carers will be made aware of their responsibilities regarding their use of social networking. Methods of school communication include; the prospectus, the website, newsletters, letters and verbal discussion. School policies and documents provide further information regarding appropriate channels of communication and means of resolving differences of opinion. Effective communication following principles of mutual respect is the best means of ensuring the best learning experiences for the child.

Parents must not post pictures of pupils, other than their own children, on social networking sites where these photographs have been taken at a school event. Parents should make complaints through official school channels rather than posting them on social networking sites. Parents should not post malicious or fictitious comments on social networking sites about any member of the school community.

5. Dealing with incidents of online bullying/inappropriate use of social networking sites

The school's anti-bullying policy sets out the processes and sanctions regarding any type of bullying by a child on the school roll.

In the case of inappropriate use of social networking by parents, the governing body will contact the parent asking them to remove such comments and seek redress through the appropriate channels such as the complaints policy and will send a letter.

The governing body understands that, 'there are circumstances in which police involvement is appropriate. These include where postings have a racist element or where violence is threatened or encouraged.' Furthermore, 'Laws of defamation and privacy still apply to the web and it is unlawful for statements to be written...which:

- expose (*an individual*) to hatred, ridicule or contempt
- cause (*an individual*) to be shunned or avoided
- lower (*an individual's*) standing in the estimation of right-thinking members of society or
- disparage (*an individual in their*) business, trade, office or profession.' (National Association of Head teachers)

7. Further Guidance and advice

Cyber bullying: Advice for Head teachers and school staff (DFE)
https://www.google.co.uk/search?hl=en&q=social+media+policy+guidance+schools&meta=&gws_rd=ssl

NASUWT Advice
http://www.nasuwt.org.uk/InformationandAdvice/Professionalissues/SocialNetworking/NASUWT_007513

